

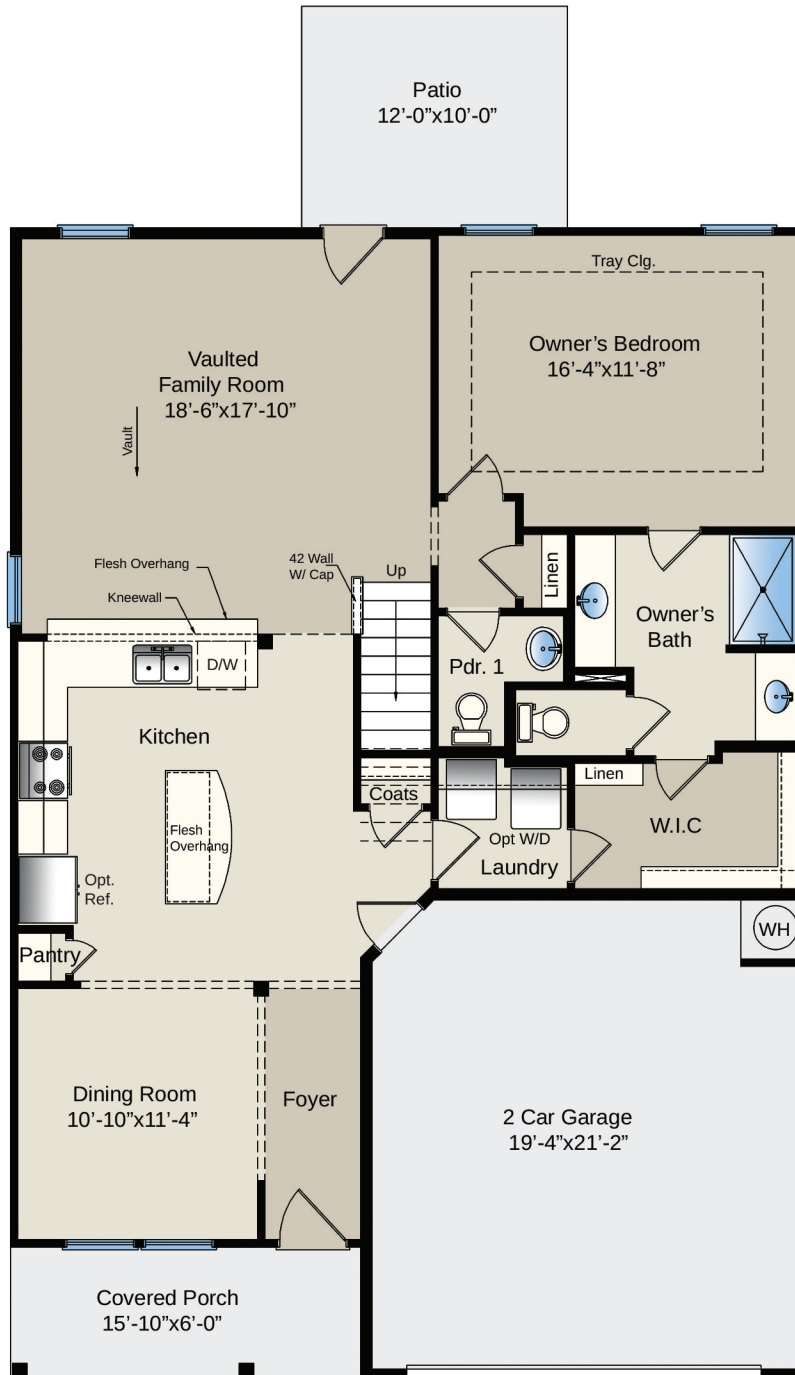
# The Jordan

3-5 Bedrooms  
2.5 Bathrooms  
2,408-2,522 sq ft



# The Jordan

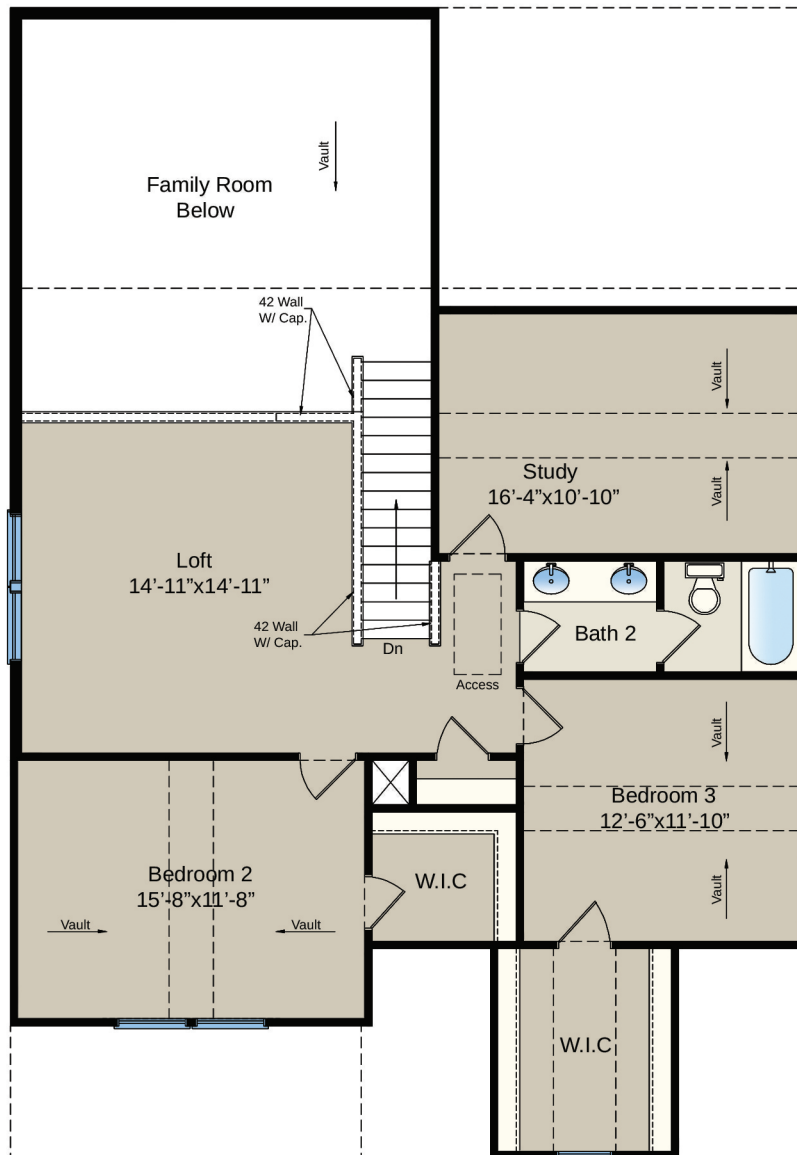
3-5 Bedrooms  
2.5 Bathrooms  
2,408-2,522 sq ft



First Floor

# The Jordan

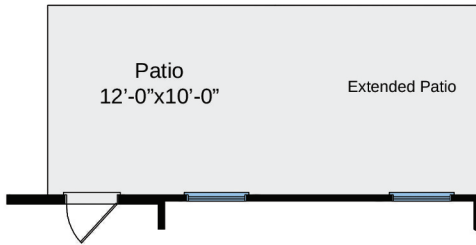
3-5 Bedrooms  
2.5 Bathrooms  
2,408-2,522 sq ft



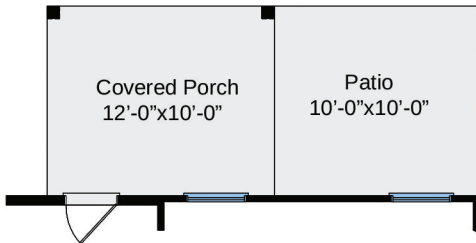
Second Floor

# The Jordan

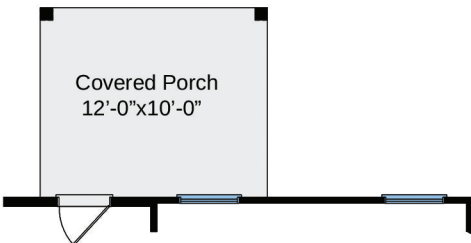
3-5 Bedrooms  
2.5 Bathrooms  
2,408-2,522 sq ft



Optional 22'-10" Wide X  
10'-0" Deep Extended Patio



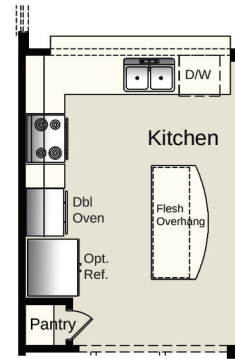
Optional Patio W/ Covered Porch



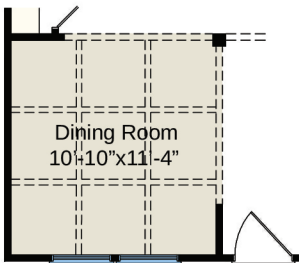
Optional 22'-10" Wide X 10'-0" Covered Porch



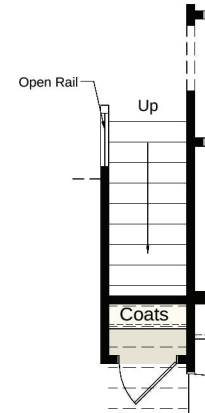
Optional Fireplace



Optional Gourmet Kitchen



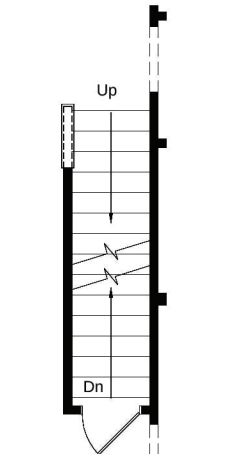
Optional Coffered Ceiling  
At Dining Room



Opt. Open Rail Ilo  
45" Half With Cap



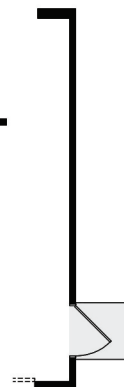
Optional Service Door At  
2 Car Garage



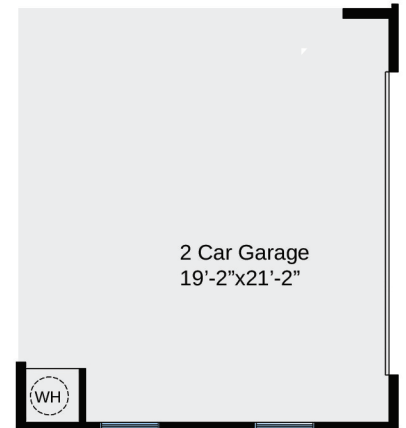
Opt. Basement Stairs



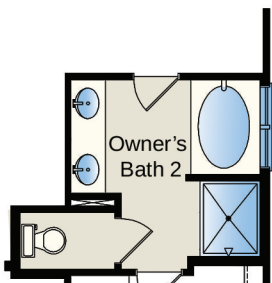
Double Garage Door Option



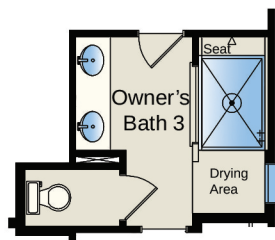
Optional Service Door  
At 1 Car Garage



Side - Load Garage Option  
Not Available With Optional 1 Car Garage



Optional Owner's Bath 2

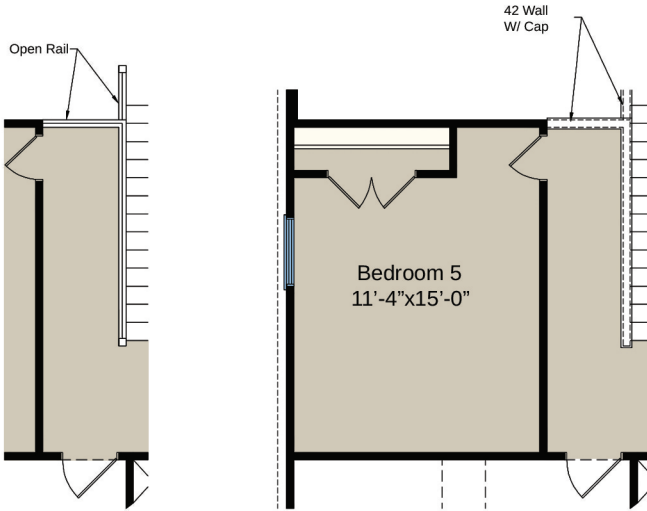


Optional Owner's Bath 3

## First Floor Options

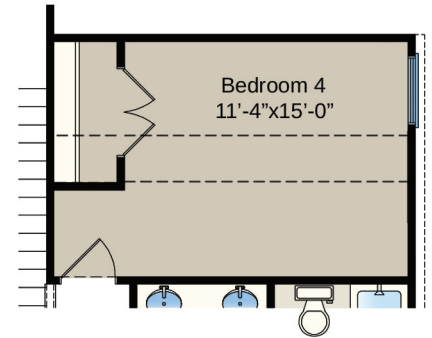
# The Jordan

3-5 Bedrooms  
2.5 Bathrooms  
2,408-2,522 sq ft

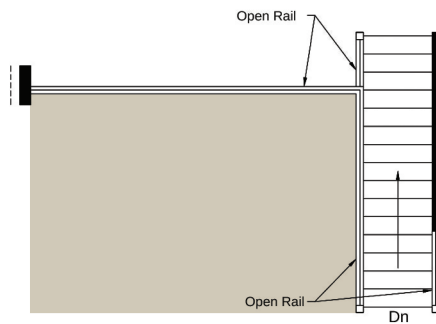


Optional Open Rail ILO  
45" Wall w/ Cap w/  
Bedroom 5 ILO Loft

Optional Bedroom 5 ILO Loft



Optional Bedroom 4 ILO Study



Open Rail ILO 45' Wall W/ Cap



Optional Window Box At Bedroom 2  
Elevation C Only